

# Service Technical Information

MODEL NO.	CDC-X146M/X1460M/X176M/X1560/X1760M/X1765M R136/R146M/R176M
SUBJECT	Malfunction of CD player



REF.No. :G - 99 - 052 - E1

DATE :08. DEC. 1999

Revision issue of wiring correction as follows

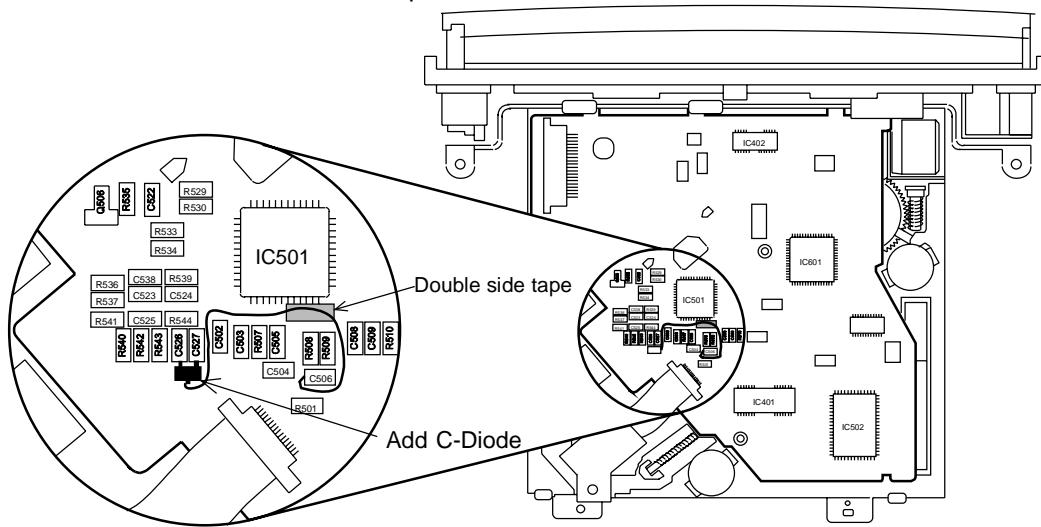
<CONTENTS>

A malfunction (No TOC, Track jump in playback, No playback, etc.) occurs on a CD player. Take the following actions on the models concerned regardless of presence or absence of the problem.

<COUNTERMEASURE>

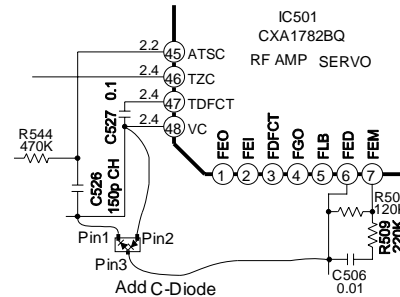
Add chip diodes to the CD P.W.B with the following procedures:

- 1) Add a chip diode (DAN217) to the CD P.W.B located at the bottom of CD mechanism Assy.
  - Solder Pin1 and Pin2 of the chip diode onto chip capacitors C526 and C527.
  - Solder a wire onto the Pin3 of the chip diode.
- 2) Solder the other end of the wire onto chip capacitor C506.
- 3) Fix the wire with double-sided tape.



<NOTE>

- A pickup may have been damaged. Check a pickup upon repair work.
- Pay attention to conductor traces under a diode. Affix a sheet under a diode for insulation.



Ref.	Parts Code	Description	Remarks
-	87-A40-250-080	C-DIODE,DAN217	-
-	87-600-042-210	WIRE,PC-4-2	-
-	88-ZG5-335-010	SH,2-5-0.1	-

G	R	Code No.	Access Code	Modified Ser. No.	Parts Schedule
-	-	-	-	S0***9A1101~	11.Nov.1999